



LOCKOUT TAGOUT CATALOGUE

ESSENTIAL PRODUCTS
FOR LOCKOUT/TAGOUT SYSTEMS
IN THE WORKPLACE

- LOCKOUT HASPS
- SAFETY PADLOCKS
- LOCKOUT TAGS
- CUSTOM TAGS & SIGNS
- PNEUMATIC & CABLE LOCKOUT
- FUSE LOCKOUT
- SOCKET, PLUG & CONTROLS LOCKOUT
- CIRCUIT BREAKER LOCKOUT
- VALVE LOCKOUT
- LOCKOUT KITS
- GROUP LOCKOUT
- LOCKOUT STATIONS



CONTENTS

Introduction	2
Lockout Hasps	3
Safety Padlocks - Steel, Aluminium & Nylon Shackle	4 - 6
Lockout Tags	7
Pneumatic & Cable Lockout	8
Fuse Lockout	9
Live Electrical Safety	10 - 11
Circuit Breaker Lockout	12 - 14
Valve Lockout	15 - 16
Lockout Kits	17 - 18
Group Lockout	19 - 20
Lockout Stations	21-22
Applying Lockout/Tagout	23

What Is Lockout/Tagout?

A Lockout is a method of keeping equipment from being set in motion and endangering workers:

- A disconnect switch, circuit breaker, valve or other energy isolation mechanism is put in the safe or off position.
- A safety device is placed over the energy-isolating mechanism to hold it in the safe position. This is where lockout/tagout products are essential.
- A padlock is attached so that the equipment cannot be energized.

In a Tagout, the energy-isolation device is placed in the safe position and a written warning is attached to it. All lockout and tagout materials are supplied by the employer. Each device must be:

- Durable to withstand wear.
- Substantial, so it will not come off easily.
- Capable of identifying the person who applied it.

Many companies issue each worker authorized to apply lockout/tagout with their own personal padlock imprinted with his/her name.

When Should You Lockout/Tagout?

Lockout/Tagout is necessary whenever you are performing service or maintenance in proximity to a machine where you could be injured by:

- Unexpected start up of the equipment.
- Release of stored energy.

Two situations which are most likely to need lockout/tagout:

- When you must remove or bypass a guard or other safety device.
- When you must place any part of your body where you could be caught by moving machinery.

Some jobs for which lockout/tagout should be used are:

- Repairing electrical circuits.
- Cleaning or oiling machinery with moving parts.
- Clearing jammed mechanisms.

Legislation requires each employer to use lockout/tagout equipment. It's your responsibility to follow whichever system has been chosen for your workplace.

Applying Lockout/Tagout (see page 23)

Energy isolation and Lockout/Tagout are to be applied only by trained employees authorized to perform service or maintenance. Before lockout/ tagout is applied, all employees who work in the affected area must be notified. Legislation requires that control of hazardous energy be done according to a step-by-step procedure:

- 1) Preparation for shutdown
- 2) Equipment shutdown
- 3) Equipment isolation
- 4) Application of lockout devices
- 5) Control of stored energy
- 6) Equipment isolation verification
- 7) Performing the work

INTRODUCTION

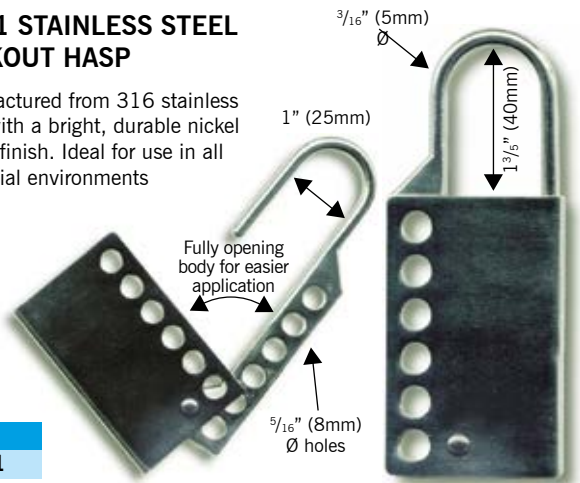
Many industrial accidents are caused by the unexpected energisation or start up of machines/equipment or by the uncontrolled release of energy. These accidents can be prevented by proper lockout/tagout procedures.

You should consult the relevant regulations within your country to ensure you follow the correct procedures. These are designed to prevent needless deaths and serious injuries to service and maintenance personnel by controlling unauthorized or accidental use of energy.

To perform service and maintenance work on industrial equipment safely, you must understand the importance of energy control and the current regulations. You must also know how to apply energy isolation and lockout/tagout.

MLH1 STAINLESS STEEL LOCKOUT HASP

Manufactured from 316 stainless steel with a bright, durable nickel plated finish. Ideal for use in all industrial environments



Code
MLH1

MLH4 ALUMINIUM LOCKOUT HASP

Double scissor action lockout hasp manufactured from Aluminium, with 1" (25mm) and 1 1/2" (38mm) diameter jaws. Overall length 6" (149mm). Accepts padlocks with a shackle diameter up to 9/32" (7.5mm).



Code
MLH4

MLH7 FLEXIBLE LOCKOUT HASP

Manufactured from heavy duty flexible nylon with 3 1/16" (80mm) clearance. Can easily be manipulated into place. Ideal for difficult applications. Accepts padlocks with a shackle diameter up to 9mm.



Code
MLH7

MLH5 SAFETY LOCKOUT HASP

Manufactured from steel with a red plastic coated body. Scissor action with 1" (25mm) diameter jaw size. Accepts padlocks with a shackle diameter up to 3/8" (10mm).



Code
MLH5

MLH10 STAINLESS STEEL LOCKOUT HASP THIN

The MLH10 lockout hasp is manufactured with a small 3mm diameter hasp making it ideal for those 'small hole' applications.

- Accepts up to 6 padlocks
- 3/8" (10mm) dia padlock holes
- 1 1/6" (30mm) vertical hasp clearance
- Stainless steel



Code
MLH10

MLH6 SAFETY LOCKOUT HASP

Manufactured from steel with a red plastic coated body. Scissor action with 1 1/2" (38mm) diameter jaw size. Accepts padlocks with a shackle diameter up to 3/8" (10mm).



Code
MLH6

Code	Description
MLH1	Stainless steel lockout hasp
MLH4	Double scissor action Aluminium lockout hasp
MLH5	Scissor action lockout hasp 1" (25mm) jaws
MLH6	Scissor action lockout hasp 1 1/2" (38mm) jaws
MLH7	Flexible nylon lockout hasp
MLH10	Thin stainless steel lockout hasp

SAFETY PADLOCKS - NYLON BODIED STEEL SHACKLE

NYLON BODY SAFETY PADLOCKS WITH STEEL SHACKLES

These nylon body safety padlocks with steel shackles are a cost effective solution to meet your lockout requirements.

- High security key cylinder
- 2 keys to each lock
- Bodies and keys etched with key number as standard
- 9 different color options available for clear identification
- Key retaining to prevent accidental key removal when unlocked
- Available keyed to differ, keyed alike and master and differ
- Standard safety/owner labeling on both sides included
- Can be engraved if required
- Durable and lightweight with non-conductive lock bodies
- 1½" (38mm) wide x 1¾" (44mm) height bodies
- 1½" (38mm) and 3" (76mm) vertical shackle clearance
- Shackle diameter ¼" (6.4mm)



1½" (38mm) SHACKLE - KEYED DIFFERENTLY

Code	Description
TT38RED	RED Safety padlock keyed differently
TT38YLW	YELLOW Safety padlock keyed differently
TT38PRP	PURPLE Safety padlock keyed differently
TT38WHT	WHITE Safety padlock keyed differently
TT38GRN	GREEN Safety padlock keyed differently
TT38BLU	BLUE Safety padlock keyed differently
TT38TEA	TEAL Safety padlock keyed differently
TT38ORJ	ORANGE Safety padlock keyed differently
TT38BLK	BLACK Safety padlock keyed differently

3" (76mm) SHACKLE - KEYED DIFFERENTLY

Code	Description
TT38REDLONG	RED Safety padlock keyed differently
TT38YLWLONG	YELLOW Safety padlock keyed differently
TT38PRPLONG	PURPLE Safety padlock keyed differently
TT38WHTLONG	WHITE Safety padlock keyed differently
TT38GRNLONG	GREEN Safety padlock keyed differently
TT38BLULONG	BLUE Safety padlock keyed differently
TT38TEALONG	TEAL Safety padlock keyed differently
TT38ORJLONG	ORANGE Safety padlock keyed differently
TT38BLKLONG	BLACK Safety padlock keyed differently

1½" (38mm) SHACKLE - KEYED ALIKE

Code	Description
TT38REDK	RED Safety padlock keyed alike KA30003
TT38YLWK	YELLOW Safety padlock keyed alike KA30005
TT38PRPK	PURPLE Safety padlock keyed alike KA30002
TT38WHTK	WHITE Safety padlock keyed alike KA30009
TT38GRNK	GREEN Safety padlock keyed alike KA30001
TT38BLUK	BLUE Safety padlock keyed alike KA30007
TT38TEAK	TEAL Safety padlock keyed alike KA30004
TT38ORJK	ORANGE Safety padlock keyed alike KA30006
TT38BLKK	BLACK Safety padlock keyed alike KA30008

3" (76mm) SHACKLE - KEYED ALIKE

Code	Description
TT38REDKLONG	RED Safety padlock keyed alike KA30003
TT38YLWKLONG	YELLOW Safety padlock keyed alike KA30005
TT38PRPKLONG	PURPLE Safety padlock keyed alike KA30002
TT38WHTKLONG	WHITE Safety padlock keyed alike KA30009
TT38GRNKLONG	GREEN Safety padlock keyed alike KA30001
TT38BLUKLONG	BLUE Safety padlock keyed alike KA30007
TT38TEAKLONG	TEAL Safety padlock keyed alike KA30004
TT38ORJKLONG	ORANGE Safety padlock keyed alike KA30006
TT38BLKKLONG	BLACK Safety padlock keyed alike KA30008

**MASTER AND DIFFER AVAILABLE
PLEASE CALL US FOR DETAILS**

Code	Description
PKEY	ADDITIONAL/REPEAT PADLOCK KEY

NYLON BODY SAFETY PADLOCKS WITH NON-CONDUCTIVE PLASTIC SHACKLES

These nylon body safety padlocks with non-conductive plastic shackles are a cost effective solution to meet your lockout requirements.

- High security key cylinder
- 2 keys to each lock
- Bodies and keys etched with key number as standard
- 9 different color options available for clear identification
- Key retaining to prevent accidental key removal when unlocked
- Available keyed to differ, keyed alike and master and differ
- Standard safety/owner labeling on both sides included
- Can be engraved if required
- Durable and lightweight with non-conductive lock bodies
- 1½" (38mm) wide x 1¾" (44mm) height bodies, vertical shackle clearance 1½" (38mm), shackle diameter ¼" (6.4mm)



SAFETY PADLOCKS KEYED DIFFERENTLY

Code	Description
NC38RED	RED Safety padlock keyed differently
NC38YLW	YELLOW Safety padlock keyed differently
NC38PRP	PURPLE Safety padlock keyed differently
NC38WHT	WHITE Safety padlock keyed differently
NC38GRN	GREEN Safety padlock keyed differently
NC38BLU	BLUE Safety padlock keyed differently
NC38TEA	TEAL Safety padlock keyed differently
NC38ORJ	ORANGE Safety padlock keyed differently
NC38BLK	BLACK Safety padlock keyed differently

SAFETY PADLOCKS KEYED ALIKE

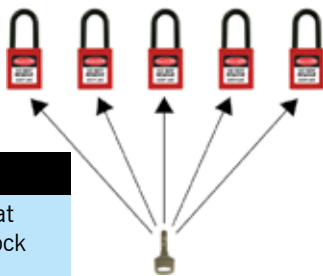
Code	Description
NC38REDK	RED Safety padlock keyed alike KA30003
NC38YLWK	YELLOW Safety padlock keyed alike KA30005
NC38PRPK	PURPLE Safety padlock keyed alike KA30002
NC38WHTK	WHITE Safety padlock keyed alike KA30009
NC38GRNK	GREEN Safety padlock keyed alike KA30001
NC38BLUK	BLUE Safety padlock keyed alike KA30007
NC38TEAK	TEAL Safety padlock keyed alike KA30004
NC38ORJK	ORANGE Safety padlock keyed alike KA30006
NC38BLKK	BLACK Safety padlock keyed alike KA30008

MASTER AND DIFFER AVAILABLE

PLEASE CALL US FOR DETAILS

Explanation of Keyed Alike

One key fits a series of locks



Explanation of Keyed to Differ

All locks have a different key



Explanation of Master & Differ

Each padlock is keyed differently the master key will open all padlocks



Code	Description
PKEY	Additional/repeat individual padlock key

REECE ALUMINIUM BODY SAFETY PADLOCKS WITH STEEL SHACKLES

These Aluminium bodied safety padlocks are unique in the lockout safety market in having lock numbers engraved on the body and key as standard to ensure safe padlock control

- High security key cylinder with 20,800 combinations
- Popular "Dimple" key to prevent unauthorised key additions
- Lightweight corrosion-resistant aluminium body
- Key retaining to prevent accidental key removal when unlocked
- 9 Different vibrant anodised colors for clear identification
- Plain sides and face to allow clear additional engraving of names, logos etc.
- Bodies and key heads etched with key number as standard
- Non-magnetic and non-sparking
- 1½" (38mm) wide x 1¾" (44mm) height bodies
- 1½" (38mm) and 3" (76mm) vertical shackle clearance options
- Shackle diameter ¼" (6.4mm)



NEW!



1½" (38mm) SHACKLE - KEYED DIFFERENTLY

Code	Description
AL38RED	RED Safety padlock keyed differently
AL38YLW	YELLOW Safety padlock keyed differently
AL38PRP	PURPLE Safety padlock keyed differently
AL38SVR	SILVER Safety padlock keyed differently
AL38GRN	GREEN Safety padlock keyed differently
AL38BLU	BLUE Safety padlock keyed differently
AL38ORJ	ORANGE Safety padlock keyed differently
AL38BLK	BLACK Safety padlock keyed differently
AL38BRN	BROWN Safety padlock keyed differently

1½" (38mm) SHACKLE - KEYED ALIKE

Code	Description
AL38REDK	RED Safety padlock keyed alike-KA50001
AL38YLWK	YELLOW Safety padlock keyed alike-KA50003
AL38PRPK	PURPLE Safety padlock keyed alike-KA50002
AL38SVRK	SILVER Safety padlock keyed alike-KA50004
AL38GRNK	GREEN Safety padlock keyed alike-KA50008
AL38BLUK	BLUE Safety padlock keyed alike-KA50005
AL38ORJK	ORANGE Safety padlock keyed alike-KA50009
AL38BLKK	BLACK Safety padlock keyed alike-KA50006
AL38BRNK	BROWN Safety padlock keyed alike-KA50007

3" (76mm) SHACKLE - KEYED DIFFERENTLY

Code	Description
AL38REDLONG	RED Safety padlock keyed differently
AL38YLWLONG	YELLOW Safety padlock keyed differently
AL38PRPLONG	PURPLE Safety padlock keyed differently
AL38SVRLONG	SILVER Safety padlock keyed differently
AL38GRNLONG	GREEN Safety padlock keyed differently
AL38BLULONG	BLUE Safety padlock keyed differently
AL38ORJLONG	ORANGE Safety padlock keyed differently
AL38BLKLONG	BLACK Safety padlock keyed differently
AL38BRNLONG	BROWN Safety padlock keyed differently

3" (76mm) SHACKLE - KEYED ALIKE

Code	Description
AL38REDKLONG	RED Safety padlock keyed alike-KA50001
AL38YLWKLONG	YELLOW Safety padlock keyed alike-KA50003
AL38PRPKLONG	PURPLE Safety padlock keyed alike-KA50002
AL38SVRKLONG	SILVER Safety padlock keyed alike-KA50004
AL38GRNKLONG	GREEN Safety padlock keyed alike-KA50008
AL38BLUKLONG	BLUE Safety padlock keyed alike-KA50005
AL38ORJKLONG	ORANGE Safety padlock keyed alike-KA50009
AL38BLKKLONG	BLACK Safety padlock keyed alike-KA50006
AL38BRNKLONG	BROWN Safety padlock keyed alike-KA50007

MASTER AND DIFFER AVAILABLE

PLEASE CALL US FOR DETAILS

Code	Description
PKEY	ADDITIONAL/REPEAT PADLOCK KEY

OSHA STANDARD “TUFF-TAGS”

Manufactured from a double layer of high impact styrene and resistant to water and oil with a brass eyelet to take a shackle diameter of up to 8mm. These reusable tags easily pass the 50lbs “pull force” required by OSHA and offer a double sided, easy to write and clean surface. Supplied in packs of 10



Description

Lockout safety tag/Pack 10

Size: 5½” (140mm) x 2¾” (70mm)

Please call us if you would like a bespoke version creating.

PERSONALIZED ID TAGS

These personalized tags are printed on both sides with our standard notice. Your employee name and photograph are added to the print which clearly shows who is working on the isolated equipment. Size: 4½ x 3” (115 x 75mm).

To order, simply email us your photographs and names



Front

Back



Code	Description
PTG01	Personalized ID Tag

TWO PART ISOLATION TAG

Our 2 part isolation tag is ideal for more complex isolations where traceability is important. After parts 1 and 2 are filled in, part 1 is attached to the isolation point. Part 2 is detached and returned back to the responsible person as confirmation of isolation. Both parts of the tag have areas for tag and permit numbers which can be entered onto the permit to work, again to aid traceability.

Once the job is complete, both parts can be filed with the permit as a long term record of the work. Alternatively if used with a dry wipe marker, both parts can be cleaned ready for re-use. Parts 1 and 2 are pre-scored to allow easy separation by hand.

Combined size: 10¾ x 4” (265mm x 100mm)

Supplied in packs of 50

Material: PVC

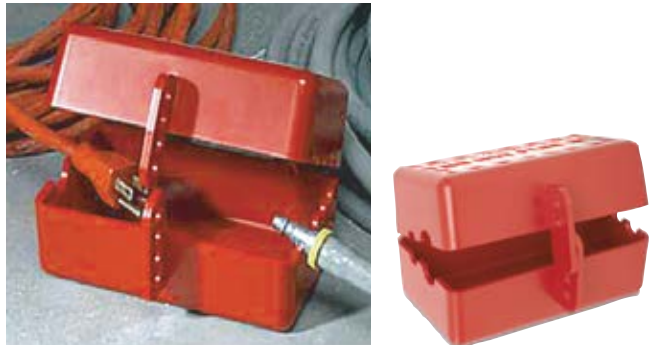


Code	Description
ISTAG50	Pack of 50 Isolation Tags
RWPT01	Water based non-permanent pen
RWPT02	Oil based permanent pen



LARGE ELECTRICAL AND PNEUMATIC LOCKOUT

- Accommodates a large variety of electrical plugs up to 3 1/2" (89mm) diameter and 5" (127mm) in length as well as male air hose connectors.
- Works on 110V, 220V and 550V plugs.
- 4 padlocks can be applied.



Code	Description
RS3901	Electrical/Pneumatic lockout

CABLE LOCKOUT

A flexible, cost effective cable lockout ideal for locking off multiple isolators situated next to each other. Can also be used in many other situations such as valve lockouts etc.

The simple gun type operation makes this easy to use. Supplied as standard with 71"(1.8m) cable.



Code	Description
BS12	Cable lockout 70 3/4" (1.8m) cable

PNEUMATIC LOCKOUT

Isolate pneumatic energy without the expense of installing in-line lockout valves. Our pneumatic lockout is applied to the male fitting, isolating equipment from all compressed air sources.

Accommodates the majority of 1/4" (6.35mm), 3/8" (9.52mm) and 1/2" (12.7mm) male fittings.



Code	Description
BS11	Pneumatic lockout



Aluminium/Galvanized Steel Car Seals

- Choice of 5 colors: Black, Red, Green, Blue, Yellow
- Cable length is 39" (1000mm)
- Cable manufactured from galvanized steel strand
- Cable diameter is 3/32" (2.5mm)
- Body manufactured from Aluminium
- Each seal marked with a unique serial number

When ordering replace asterisk (*) with color code:

BLK (Black) **RED** (Red) **GRN** (Green) **BLU** (Blue) **YLW** (Yellow)

Code	Description
SEAL3*	Aluminium galvanized cable car seal/Pack 10

ZINC/STAINLESS STEEL CAR SEALS

Car seals are manufactured from zinc with a 37 1/2" (950mm) stainless steel cable attached. Ideal for long term uses, each car seal is self locking so once the cable passes through the body the only way to remove it is by cutting.

All seals are individually numbered to prevent tampering and allow easy identification. Supplied in packs of 10.

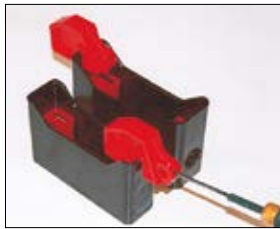


Code	Description
SEAL2	Zinc stainless steel cable car seal/pack 10

UNIVERSAL LOCKOUT DEVICE FOR FUSE HOLDERS

- Will lockout most types of fuse holders - one size fits all.
- Lockout 20 Amp to 400 Amp fuse holders.
- 8mm padlock hole - max clamping $\frac{3}{16}$ " (5mm).
- Made from sturdy nylon plastic.
- Dimensions: $2\frac{3}{8} \times 1\frac{3}{8} \times \frac{3}{5}$ " (60 x 35 x 15mm).

Code	Description
UFL2	Universal Fuse Lockout



SLIMLINE UNIVERSAL FUSE LOCKOUT

Our RFB5 universal fuse lock has similar properties to the UFL2. However, its slimline, low profile design allows this to be used on fuse carriers that are fitted within enclosures, very close to the door.

By using the RFB5, fuse carriers can be locked off and the enclosure door still closed.



Code	Description
RFB5	Slimline Fuse Lockout

BOTTLE FUSE LOCKOUTS

The new bottle fuse lockout is available in two sizes to fit DZ3 and D02 Fuses.

Remove the fuse, screw in the lockout device and secure using a cable lockout and padlock.

D02 for small fuses
DZ3 for large fuses



Code	Description
D02	Small bottle fuse lockout
DZ3	Large bottle fuse lockout

SAFETY RESCUE HOOKS

Used for the retrieval of victims of electric shock, safeguarding the life of the rescuer. Two sizes available, 25mm diameter x 1000mm long for use with up to 1kV system voltage and 35mm diameter x 1950mm long for use with up to 60kV system voltage. Required in all live line areas as part of Health & Safety risk assessment.



HOOK STATIONS

Offer safe storage for the hook and should be placed in a prominent and easily accessible position near to the 'live' site.

Code	Description
ELE18	1kV rescue hook
ELE18A	1kV rescue hook station
ELE19	60kV rescue hook
ELE19A	60kV rescue hook station

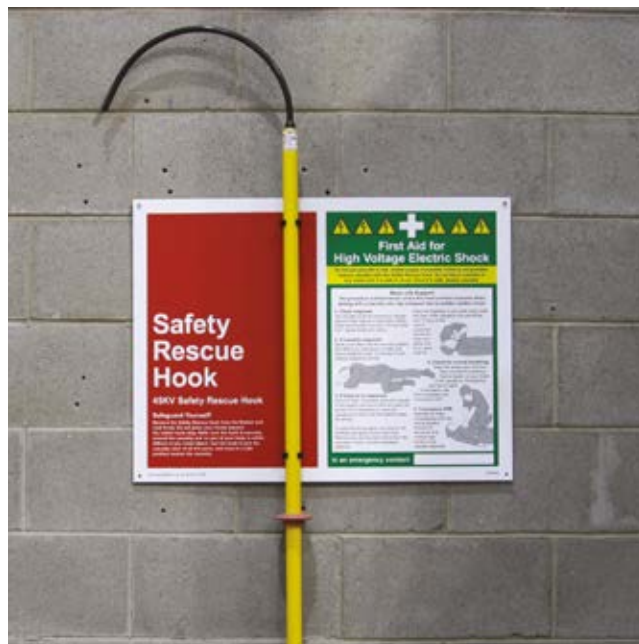
RESCUE HOOK PANEL

Highly visible 45kV Rescue Hook Station to allow rapid intervention in the event of an electrical incident. Station provides secure hook storage for easy access near to the "live" site.

Live Saving First Aid for HV Electric Shock Instructions printed on panel.

W 800 mm x H 600 mm.

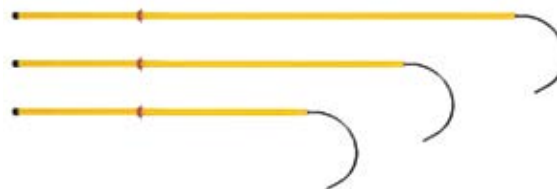
Hook not included



Code	Description
RCS45A	Rescue hook panel for 45kV rescue hook
RCS90A	Rescue hook panel for 90kV rescue hook
RCS225A	Rescue hook panel for 225kV rescue hook

SAFETY RESCUE HOOKS

Large hook insulated rescue sticks which allow quick rescue of an electrified casualty in the event of an accident. Wall fittings included.



Code	Description
RCS45	45kV rescue stick 1.65m rated to 45kV
RCS90	90kV rescue stick 2.15m rated to 90kV
RCS225	225kV rescue stick 2.43m rated to 225kV

SAFETY INSULATING PLATFORM

Made from high impact polypropylene in accordance with the UNE 204001 standard.

Non-slip platform and rubber feet for greater slip resistance on the floor, plus protection from wear. Platform 525 x 525mm.

Rated 45kV.



Code	Description
RCS45	45kV rescue stick 1.65m rated to 45kV
RCS90	90kV rescue stick 2.15m rated to 90kV
RCS225	225kV rescue stick 2.43m rated to 225kV

DIELECTRIC SAFETY BOOTS

- Certified protection against electric shock.
- Steel toecap, electrical insulating.
- Conforms to EN345-1.SB and EN50321 Class 0.
- Certified for use up to 1000V AC and 1500V DC (Class 0).
- Oil and chemical resistant sole.
- Overall boot tested to 20kV.
- Sizes 6 to 13 (European 40 to 47).



Replace the asterisk (*) in the product code with the required size.

Code	Description
ELE20/*	Dielectric safety boots

DIELECTRIC SAFETY OVER BOOTS

- Provides protection of up to 20kV over the complete boot for 8 hours.
- Ingenious rear entry design ensures the boot is quick and easy to fit and remove.
- Ideal for personnel who have to continually enter and exit hazardous areas.
- Slip resistance performance double the requirement by EN 13287 SRA and SATRA TM144 standards.
- Seamless construction.
- Fuel and oil resistant.
- 3 sizes:
MED (6-8),
LRG (9-11),
XLG (12-14).



Replace the asterisk (*) in the product code with the required size.

Code	Description
ELE70A/*	Dielectric safety over boots

24kV SUBSTATION RESCUE KIT

Essential lifesaving electrical intervention equipment contained in rugged wall mounted enclosure.

- Insulated Rescue Hook rated to 24kV.
- Voltage detector on insulated pole - 5-36kV.
- Safety Insulating Platform rated to 45kV.
- Insulated cable cutters with 30mm jaws rated to 25kV.
- Class 3 (26.5kV) Electrical Insulating safety gloves with case and Talcum powder.
- Dielectric Insulating Safety boots - tested to 20kV.
- IP66 grade wall mounted storage box.
- Front panel mounted Emergency Resuscitation Instructions.

Individual components can be changed to suit specific applications and customer requirements.
Dimensions 800H x 600W x 300D mm.



Code	Description
SRK24	Wall mounted 24kV Substation Rescue Kit

CIRCUIT BREAKER LOCKOUT

CIRCUIT BREAKER LOCKOUTS

A range of four padlockable circuit breaker lockouts designed to fit most modern single and multiple pole miniature circuit breakers. Manufactured from strong nylon, this range of miniature circuit breaker lockouts allows breakers to be locked off individually.

CB01

A single pole lockout, model CB01 requires a switch breaker with a recessed hole in it. Accommodates breakers up to $\frac{9}{16}$ " (14mm) in width.



CB02

A double pole lockout, model CB02 requires the breakers to be connected with a cross bar. Accommodates breakers up to $\frac{5}{8}$ " (45mm) in width.



CB03

A single pole lockout, model CB03 does not require a switch breaker with a recessed hole in it. Accommodates breakers up to $\frac{9}{16}$ " (14mm) in width.



CB04

A double pole lockout, similar to CB02 but slightly larger to fit larger breakers. Accommodates double and triple breakers.



Code	Description
CB01	Single pole breaker lockout
CB02	Double pole breaker lockout
CB03	Single pole breaker lockout
CB04	Double pole breaker lockout

CB05

Push button operated and locates into the 2 holes either side of the breaker switch (see illustration). Fits most popular breakers up to 60 amp. Will also fit breakers connected with a cross bar. Locates prongs inside.



CB06

Push button operated and locates into the 2 holes either side of the breaker switch (see illustration). Fits most popular breakers up to 60 amp. Will also fit breakers connected with a cross bar. Locates prongs outside.



CB07

Push button operated and locates into the 2 holes either side of the breaker switch (see illustration). Extra wide for larger breakers over 60 amp. Will also fit breakers connected with a cross bar. Locates prongs inside.



CB08

Adjustable thumb wheel operation and fits larger or multi-pole circuit breakers connected with a cross bar. No holes in the breakers are required.



Code	Description
CB05	MCB lockout inside prongs
CB06	MCB lockout outside prongs
CB07	MCB lockout wide inside prongs
CB08	MCB lockout thumb wheel

'NO HOLE' CIRCUIT BREAKER LOCKOUTS

This range of 'No Hole' circuit breaker lockouts are ideal for breakers that do not have any built in locking facility. The unique design, with thumb wheel operation clasps onto the switch providing secure locking protection. Available in 3 sizes. Can be used with lockout cleats for hard to lock longer sliding switches and switches with large angular rotation.

Code	Description
CB09	277 volt lockout
CB10	480/600 volt lockout
CB11	480/600 volt oversize lockout
CLT1	Cleat for use with CB09
CLT2	Cleat for use with CB10

LOCKOUT CLEATS

Compatible with models CB09 and CB10, ensures positive lockout for hard to lock long sliding switch throws and switches with a large angular rotation. Snap-on and off design allows for use only when needed.



CB09

Fits switches $\frac{5}{8}$ " (16.5mm) wide x $\frac{1}{2}$ " (11.6mm) thick (up to 277 volt).



CB10

Fits switches $1\frac{1}{2}$ " (41.2mm) wide x $\frac{9}{16}$ " (13.9mm) thick (480/600 volt).



CB11

Fits oversized switches $2\frac{1}{2}$ " (63.5mm) wide x $\frac{3}{4}$ " (22.2mm) thick (usually 480/600 volt).



UNIVERSAL LOCKOUT FOR MINIATURE CIRCUIT BREAKERS

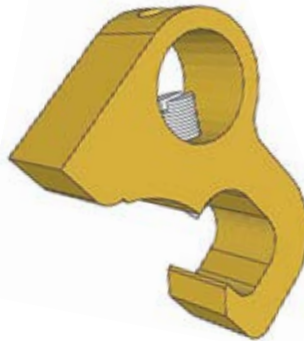
- Will lockout many types of miniature circuit breakers.
- Locks out 1 pole through to 4 pole circuit breakers.
- Dimensions: 1 3/4" x 1" x 3/8" (45 x 25 x 10mm).
- Made from durable plastic.
- Maximum clamping 5/16" (8mm).
- 5/16" (8mm) padlock hole.



Code	Description
UCL1	MCB lockout

MCB 'TOGGLE LOCK'

Possibly the simplest yet most versatile MCB lockout in our range. The CB12 'toggle lock' simply fits over the MCB toggle, and then the internal grub screw is tightened using a small flat screwdriver which secures the CB12 onto the toggle. Once tight and secure, insert a padlock which blocks access to the grub screw so the device cannot be removed or toggle operated until the lock is removed.



Code	Description
CB12	Toggle Lock

UNIVERSAL LOCKOUT FOR MOULDED CASE CIRCUIT BREAKERS

- Locks out most types of moulded case circuit breakers.
- Locks out 1 pole through to 4 pole circuit breakers.
- Dimensions: 2" x 1" x 3/4" (51 x 25 x 23mm).
- Made from durable plastic.
- Maximum clamping 9/16" (13mm).
- 5/16" (8mm) padlock hole



Code	Description
UCL2	Moulded case lockout

LOCKOUT FOR LARGE CIRCUIT BREAKERS

- Locks out most types of large circuit breakers with a toggle.
- Locks out 1 pole through to 4 pole circuit breakers.
- Made from durable plastic.
- Dimensions: 4 7/8" x 2 1/2" x 1 3/5" (125 x 63 x 40mm).
- 5/16" (8mm) padlock hole.
- Clamping 1/2" (12mm) to 3/4" (19mm).



Code	Description
UCL5	Large toggle

CIRCUIT BREAKER LOCKOUT

'NO TOOL' CIRCUIT BREAKER LOCKOUTS

These lockouts install quickly and easily without any tools. Featuring a compact universal design that fits a wide variety of single, double and triple handle circuit breakers, the 'No Tool' circuit breaker lockouts are easily attached with no modifications to the panel or circuit breaker.

To install, the user simply puts the circuit breaker handle to the 'off' position, places the lockout over the handle, tightens the set screw by hand, rotates the toggle and applies a tag and padlock.

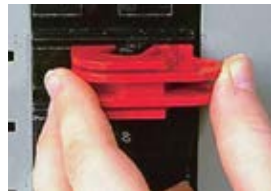
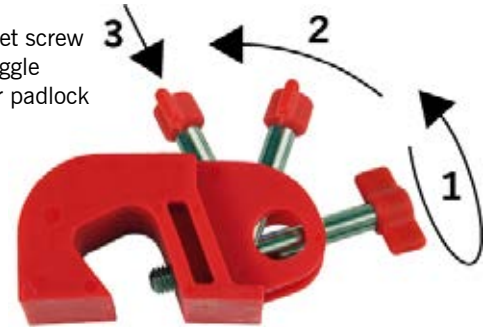
Grub Screw Version

A grub screw version (shown below) is also available which is secured using a small flat electrician's screwdriver.



Operation

1. Tighten set screw
2. Rotate toggle
3. Ready for padlock



1. Locate over handle

2. Tighten grub screw

3. Lockout/Tagout

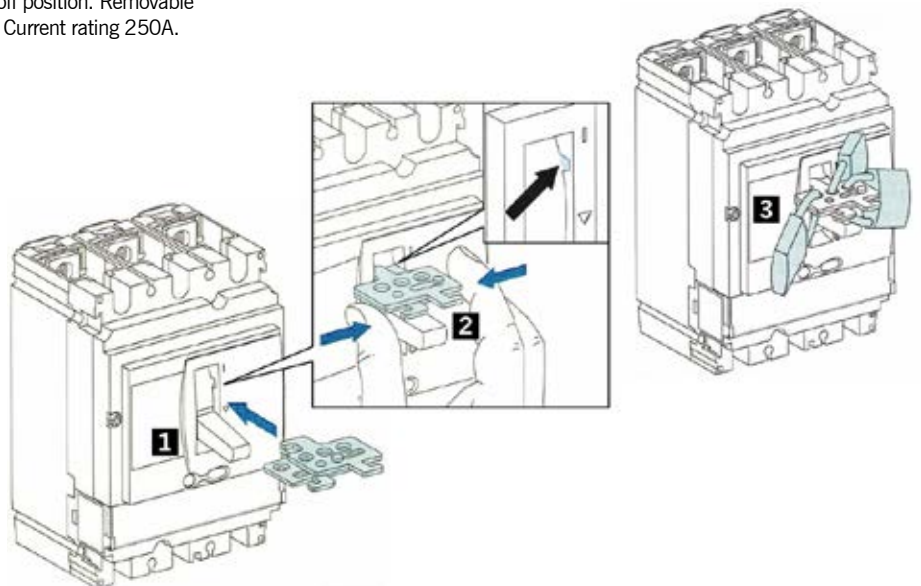
Code	Description
CB16	'No Tool' circuit breaker lockout
CB16A	Grub screw circuit breaker lockout

MERLIN GERIN POWERPACT 4C TOGGLE PADLOCKING ATTACHMENT

This device locates in the slot behind the switch toggle when in the off position, blocking its operation. Adding a padlock prevents unauthorized operation and secures the device in place when the breaker is in the off position. Removable toggle padlocking attachment locking in OFF position - Current rating 250A.

Compatible with Compact/FPower range

Small side: Large side:
 NS80 NS/NSX400-630
 NSX100-250 NSJ400-600
 NSE75-100
 NSF150-250



Code	Description
MG29370	Merlin Gerin toggle attachment

GATE VALVE LOCKOUTS

Gate valve covers are a simple, low cost, effective way to prevent unauthorized operation of valves. Valve covers consist of two flattened half moons that completely cover the valve handwheel. Once locked, the cover rotates freely around the handwheel preventing operation.

- Made of strong polypropylene plastic
- Highly resistant to cracking and abrasion
- Resistant to extreme temperature changes
- Fully dielectric
- Available in 5 sizes to fit handwheels 1" (25mm) to 14" (355mm)



Code	Inside Diameter	Inside Height	Outside Diameter	Outside Height	Lock Hole	Valve Handle Size
VS02	2 1/2" 70mm	1 1/4" 32mm	3" 76mm	1 1/2" 38mm	5/16" 8mm	1 to 2 3/4" 25 - 70mm
VS04	5" 130mm	1 1/4" 32mm	5 1/2" 140mm	1 3/4" 44mm	3/8" 9.5mm	2 3/4 to 5" 70 - 130mm
VS06	6 1/2" 170mm	1 1/2" 38mm	7" 177mm	2" 50mm	3/8" 9.5mm	5 to 6 1/2" 130 - 170mm
VS09	10" 257mm	2" 50mm	10 1/2" 267mm	2 1/2" 63mm	3/8" 9.5mm	6 1/2 to 10" 170 - 257mm
VS13	14" 355mm	2 1/2" 63mm	14 1/2" 368mm	3" 73.8mm	3/8" 9.5mm	10 to 14" 257 - 355mm



UNIVERSAL HYBRID VALVE LOCKOUT

Whether locking ball valves, gate or butterfly valves, the universal hybrid lockout secures onto the valve handwheel or lever using the 'built in' locking clamp eliminating the need for any modifications to the valve.

- With 60" (150cm) plastic coated stainless steel cable.
- Fully AISI 316 stainless steel (will not rust or flake).
- Easy to install, no valve modification necessary.
- Locks valves in the 'open' or 'closed' position.



Code	Description
NLH	Universal hybrid valve lockout

QUARTER TURN BALL VALVE LOCKOUTS

A quick and simple way of preventing the operation of quarter turn ball valves.

Manufactured from steel with powder coat finish - 2 sizes available, both accept padlocks with a shackle diameter up to 3/8" (9.5mm).

- Easy slide-on application
- Color: red



STEP 1 SLIDE ON



STEP 2 SQUEEZE TOGETHER

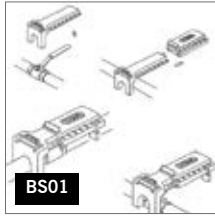


STEP 3 APPLY LOCK

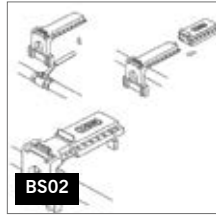
Code	Description
BS07	To fit valve levers 1/4" (6mm) to 1" (25mm) wide
BS08	To fit valve levers 1 1/4" (32mm) to 3" (75mm) wide

BALL VALVE LOCKOUTS

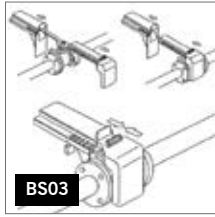
Ball valve lockouts are available in 3 sizes to lock your ball valves from 3/8" (9.5mm) to 8" (200mm). These simple, easy to use lockouts clamp over the valve lever, preventing the valve from operating, and lock in place using a padlock.



BS01



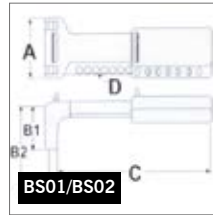
BS02



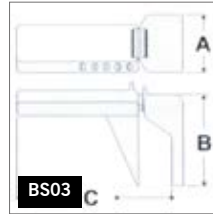
BS03



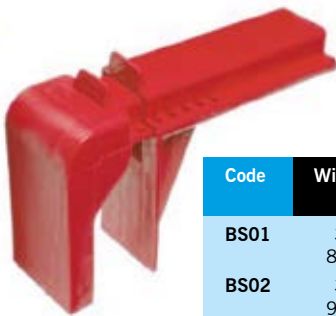
Models BS01 & BS02 can lock valves in the 'open' or 'closed' positions. Model BS03 locks 'closed' only.



BS01/BS02



BS03

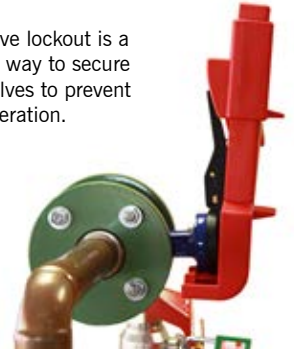


Red ball valve lockouts supplied as standard, other colors available on request.

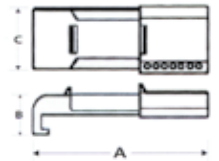
Code	Width (A)	Height (B)	Length of Handle (C)	Lock Hole (D)	Valve Size
BS01	3 1/8" 80mm	1 1/4" 32mm	5 1/4" - 7 1/2" 135 - 190mm	5/16" 8mm	3/8 to 1 1/4" 9.5 - 31.5mm
BS02	3 3/4" 95mm	5" 125mm	7 1/2" - 10" 190 - 250mm	5/16" 8mm	1 1/2 to 2 1/2" 37.5 - 62.5mm
BS03	4" 100mm	1 1/2" 38mm	12 - 17 1/2" 300 - 438mm	5/16" 8mm	2 to 8" 50 - 200mm

BUTTERFLY VALVE LOCKOUTS

The butterfly valve lockout is a simple, effective way to secure your butterfly valves to prevent unauthorized operation.



Red ball valve lockouts supplied as standard, other colors available on request.



ASSEMBLY INSTRUCTIONS



Code	Length (A)	Height (B)	Width (C)	Lock Hole (D)
BS04	12" 305mm	2 3/4" 70mm	4" 102mm	3/8" 9.5mm

BALL VALVE LOCKOUTS

Manufactured from ultra-tough polypropylene, the two halves of the device encompass the ball valve lever to prevent inadvertent activation of the valve.

- Made of strong polypropylene plastic.
- Two sizes available, BS16 locks valves 1/2" (12.5mm) to 1 1/4" (31mm) in open and closed positions, BS17 locks valves from 2" (50mm) to 8" (200mm) in closed position.
- Highly resistant to cracking and abrasion.
- Resistant to extreme temperature changes.



Red ball valve lockouts supplied as standard, other colors available.



BS16

BS17



Code	Description
BS16	1/2" - 1 1/4" (12.5mm - 31mm)
BS17	2" - 8" (50mm - 200mm)

BESPOKE LOCKOUT KITS

Our lockout kits are ideal for individuals or organizations equipping full departments with lockout equipment. Many organizations start the roll out of lockout using the smaller starter kits to ensure that all employees are assigned such kits that then give total legal compliance. The more comprehensive kits, contained in rugged tool chests, are also often used on project work where contractors need a versatile range of lockout devices to suit applications unknown at the outset of the activities and they are then an excellent solution to avoid costly delays. A service we offer is to cater for the growing demand of bespoke kits as the use of lockout in an organization matures. We will work with you to develop a kit tailored to suit exact requirements and can then quickly build the required sets as well as needs for any point of sale packaging.

INTERMEDIATE CIRCUIT BREAKER LOCKOUT KIT

This Circuit Breaker/Isolator lockout kit is our best seller and is ideal for Electricians and Engineers who regularly work on various applications where power is isolated via circuit breakers or electrical isolators. Designed to cover most industrial applications this kit includes ten different types of breaker lockout, models CB01, CB02, CB03, CB04, CB05, CB06, CB07, CB08, CB09 and CB16 which will cover the vast majority of the breakers you need to lockout. Also included is our most popular MLH1 stainless steel lockout hasp, two individual TT38RED padlocks and a pack of our re-usable 'Do Not Operate' tags along with a non-permanent marker and ties for clear lockout identification. All this is supplied as a kit in a strong rigid plastic storage container.



Code	Description
INTUKIT	Intermediate MCB Lockout/Tagout kit

DOMESTIC CIRCUIT BREAKER LOCKOUT KIT

This Circuit Breaker/Isolator lockout kit is aimed at the Domestic electrician who regularly works on various applications where power is isolated via circuit breakers or electrical isolators. The kit includes eight different types of breaker lockout, models CB01, CB02, CB03, CB05, CB08, CB09, CB12, CB13 and CB16 which cover the vast majority of domestic applications where you will usually find breakers up to 63 amp. Also included in the kit is our MLH1 multiple lockout hasp to allow more than one padlock to be applied at any point of isolation, a TT38RED individual padlock, and a pack of 'Do Not Operate' tags with marker pen for clear lockout identification. All this is supplied as a kit in a strong canvas bag which can be worn around the waist allowing contents to be carried at all times.



Code	Description
DOMUKIT	Domestic MCB Lockout/Tagout Kit

STARTER CIRCUIT BREAKER LOCKOUT KIT

This is an ideal starter Circuit Breaker lockout kit for individual use. It contains 5 individual breaker lockouts, a single safety tag and a TT38RED padlock keyed to differ. All this is packed into a mini pouch with belt loop which allows the products to be carried at all times.



Code	Description
STAUKIT	Starter MCB Lockout/Tagout Kit

ULTIMATE GENERAL PURPOSE LOCKOUT KIT

A fully comprehensive kit ideal for groups of contractors or departments. This kit contains all equipment needed for locking off ball valves, gate valves, pneumatic equipment, circuit breakers, toggle switches, electrical isolators, portable equipment and device that utilises the popular IEC60320 input connector seen on the backs of PCs etc.

Kit includes

- | | |
|---------------------------------|---|
| 1 x SBOX03 Storage box | 1 x VS04R Gate valve lockout |
| 1 x BS01 Ball valve lockout | 1 x VS06R Gate valve lockout |
| 1 x BS02 Ball valve lockout | 30 x "Do Not Operate" Safety tags |
| 2 x BS12 Cable lockout | 1 x RWPT01 Non-permanent marker |
| 4 x MLH1 Lockout hasp | 1 x Each of the circuit breaker lockouts CB01 to CB16, UCL5, UFL2 and 1x CLT1 and CLT2 lockout cleats |
| 8 x TT38RED Individual padlocks | |
| 3 x BS11 Pneumatic lockout | |
| 1 x YSLB1 Lockout bag | |
| 1 x LP770 Plug lockout | |
| 1 x IEC Connector lockout | |
| 1 x VS02R Gate valve lockout | |



Code	Description
USRSPKIT2	Comprehensive lockout kit box and contents

LOCKOUT/TAGOUT SAFETY EQUIPMENT BOX HOLDER

Wall mounted, ideal for keeping your lockout kit nearby and in a prominent position. Holds SBOX02 Medium lockout box, KITO and KIT1.

Size (H x W) 15³/₄" (450mm) x 15³/₄" (450mm)
Kit box not included



Code	Description
LSE320	Ultimate MCB Lockout/Tagout Kit

INTERMEDIATE GENERAL PURPOSE LOCKOUT KIT

A very flexible intermediate kit, which is ideal for individuals or small groups/ departments. This kit contains equipment for locking off ball valves, gate valves, pneumatic equipment, circuit breakers, toggle switches, electrical isolators and portable equipment with multiple padlocks.

Kit includes

- | | |
|-----------------------------------|---|
| 1 x SBOX02 Storage box | 1 x VS04R Gate valve lockout |
| 1 x BS01 Ball valve lockout | 1 x VS06R Gate valve lockout |
| 1 x BS02 Ball valve lockout | 1 x BS11 Pneumatic lockout |
| 1 x BS12 Cable lockout | 1 x YSLB1 Lockout bag |
| 2 x MLH1 Lockout hasp | 1 x CB01, CB02, CB03 and CB16 Circuit Breaker lockout |
| 4 x TT38RED Individual padlocks | 1 x RWPT01 Non-permanent marker |
| 30 x "Do Not Operate" Safety tags | |
| 1 x VS02R Gate valve lockout | |



Code	Description
USRSPKIT1	Intermediate lockout kit box and contents

GENERAL PURPOSE LOCKOUT KIT

A great starter kit which is ideal for individual contractors. This kit contains equipment for locking off small ball valves, gate valves, pneumatic equipment, circuit breakers, toggle switches and electrical isolators

Kit includes

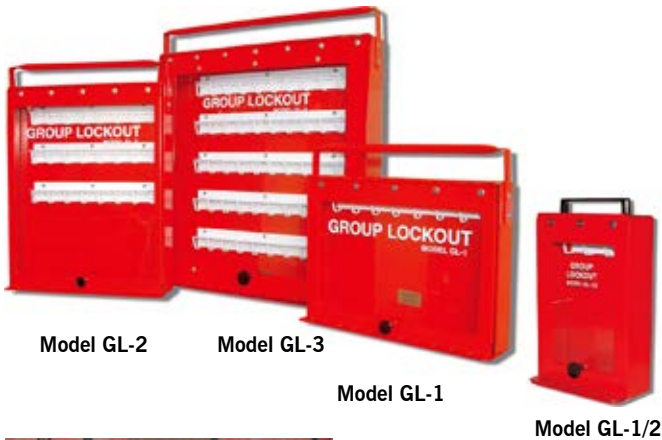
- | | |
|-----------------------------------|---|
| 1 x SBOX02 Storage box | 1 x RWPT01 Non-permanent marker |
| 1 x BS01 Ball valve lockout | 1 x BS10 Adjustable gate valve lockout |
| 1 x BS12 Cable lockout | 1 x BS11 Pneumatic lockout |
| 1 x MLH1 Lockout hasp | 1 x CB01, CB02, CB05, CB12 and CB16 circuit breaker lockout |
| 2 x TT38RED Individual padlocks | |
| 10 x "Do Not Operate" Safety tags | |



Code	Description
USRSPKIT0	Starter lockout kit box and contents

STEEL WALL MOUNTED OR PORTABLE GROUP LOCKOUT BOX

- Steel construction of case and hooks for durability.
- Carrying handle allowing either portable or stationary use.
- Mounting holes for mounting to wall or equipment.
- Transparent window for clear visibility of keys and tags.
- Spring loaded retainer bar ensures keys stay on the hooks.
- Models GL1 & GL2 have an A5 document holder for your company's lockout/tagout forms.
- Durable red powder painted finish.
- 4 Sizes available.



Code	Lockout Box Description (W x H x D)
GL1/2	4 hook, 6 x 9 ¹ / ₂ x 3" (150 x 240 x 75mm)
GL1	8 hook, 12 x 10 x 3" (300 x 275 x 75mm)
GL2	24 hook, 12 ³ / ₈ x 17 ¹ / ₈ x 3" (315 x 440 x 75mm)
GL3	50 hook 17 ¹ / ₂ x 19 ¹ / ₂ x 3" (450 x 500 x 75mm)

WALL MOUNTED GROUP LOCKOUT BOX

Manufactured from high quality impact resistant plexiglass, these lockout boxes are ideal for group lockout situations. Complete with 16 key hangers and a clear tamper proof sliding cover which allows the contents to be easily viewed/checked.

Dimensions (H x W x D)
3.5" x 11" x 12.5"
(90 x 280 x 320mm)



Code	Description
GLB1	Wall mounted group lockout box

CONTROL KEY SAFETY LOCKOUT BOXES

Safety lockout boxes are ideal for group lockout situations. After the equipment to be worked on has been locked off, all lockout keys/fuses etc are placed inside the lockout box and locked by the responsible person using the control key. Each worker then removes and retains a secondary key ensuring access cannot be gained to the keys/fuses etc inside until all work is completed and all secondary keys returned. Only when all secondary keys are in position, can the responsible person open the lockout box using the control key.

- Control key can be withdrawn in the locked and unlocked positions.
- Secondary keys are captive and can only be withdrawn when in the locked position.
- Control keys can be 'keyed alike' for multiple boxes under the control of the responsible person.
- External captive key rail which is locked in place when door is closed.
- All keys are provided with brass identification tags.
- All secondary keys are 'keyed to differ'.
- All control lock numbers are recorded.
- Each box numbered.



Code	Description (W x H x D)
TYPE1	6 x 7 ⁷ / ₈ x 4" (150 x 200 x 105mm) with 1 control lock and 4 secondary locks
TYPE2	6 x 9 ¹ / ₄ x 4" (150 x 230 x 105mm) with 1 control lock and 7 secondary locks

5-LOCK SAFETY LOCKOUT BOXES

This safety lockout box has 5 individually keyed locks to facilitate group lockout. Each worker removes and retains their key which ensures that access to the contents of the lockout box cannot be released until each of the keys has been returned by its respective keeper.

- Made of heavy duty grey coated steel
- All keys are 'keyed to differ'
- Internal steel shelf and 3 hooks
- Hole punched flange top and bottom for additional padlocks
- Dimensions (H x W x D): 9 x 6 x 3 1/2" (230 x 155 x 90mm)

Optional Customised Self-adhesive Labelling

Personalise your 5-lock lockout box with custom text and/or logo. Label design is shown left, just change the text and/or add logo (specify text/supply logo when ordering). Supplied with 5 write-on key tags.

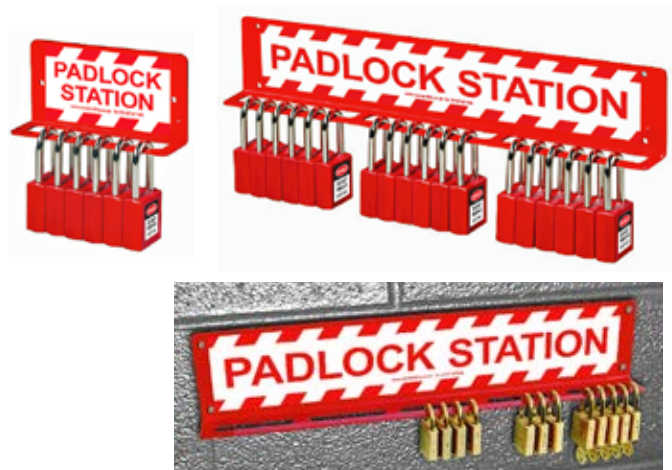


Code	Description
EK5LO	5 lock safety lockout box without label
EK5LAB	Self-adhesive label fitted to lockbox plus 5 write-on key tags

PADLOCK STATIONS

Manufactured from 14 gauge steel with a durable red powder coated finish these padlock stations are ideal for keeping padlocks safe and secure. Padlocks can be securely locked onto the station and only be removed by the authorized key holder.

Alternatively, padlocks can be left open on the station ready for use with or without keys. There are two sizes available, a small holder allowing up to 10 padlocks, and a large holder allowing up to 30 padlocks (capacities are subject to padlock size).



Code	Description
PS10	Small padlock station
PS30	Large padlock station

PORTABLE GROUP LOCKOUT BOX

Simplifies the lockout of larger machines. After the equipment to be worked on has been isolated from the energy source, the lockout keys are placed inside the multiple lockout box and then padlocked by the controlling person.

Each person working then applies their own unique padlock to the lockout box. Only when all unique padlocks have been removed (including the controller's padlocks) can the necessary keys be re-issued to re-start.



Dimensions (H x W x D)
6" x 3.75" x 9"
(153 x 95 x 230mm)

Code	Description
RGL12	Portable lockout box

GROUP LOCK BOX

- Wall mounted or portable - carry handle.
- Made from sturdy moulded plastic.
- Spark resistant.
- Lightweight - only 600 grams.
- Clear front - keys can be viewed inside.
- 6 hooks inside for keys to hang.
- Accommodates up to 16 padlocks.
- Key slot for use after box closure.
- Size: 7 7/8" x 6" x 3 1/2" (200 x 150 x 90 mm) excl. handle.



Code	Description
GLB2	Lockout Box - Red

LOCKOUT STATIONS

Many companies are now centralizing lockout tagout equipment using lockout stations that contain all the lockout equipment needed for an individual machine or for an entire department. Reece Safety manufactures such lockout stations in a broad range of standard designs to suit the most common configurations.

Each product is located on a hook and the board is printed to show an exact shadow behind it which immediately indicates products are missing. This 'eyesight management' feature makes lockout management much easier. Any standard board can be customised to change a color scheme to include corporate names or badges and we can also customize a board totally to suit exact requirements from customers.



LSE304

Size (H x W):
20½ x 26" (520 x 660mm)
Supplied with the following:
20 x TT38RED Padlocks
8 x RLTT50 Pack of 10 Tags
2 x MLH5 Lockout Hasps 1" (25mm)

Code	Description
LSE304	Station only
LSE304FS	Station & contents



LSE305

Size (H x W):
23½ x 31½" (600 x 800mm)
Supplied with the following:
50 x TT38RED Padlocks
6 x RLTT50 Pack of 10 Tags
5 x MLH5 Lockout Hasps 1" (25mm)
1 x RWPT01 Pen

Code	Description
LSE305	Station only
LSE305FS	Station & contents



LSE301

Size (H x W):
15¾ x 11" (400 x 280mm)
Supplied with the following:
4 x TT38RED Padlocks
1 x RLTT50 Pack of 10 Tags



LSE302

Size (H x W):
15¾ x 11" (400 x 280mm)
Supplied with the following:
4 x TT38RED Padlocks
1 x RLTT50 Pack of 10 Tags
1 x MLH5 Lockout Hasp 1" (25mm)

Code	Description
LSE301	Station only
LSE301FS	Station & contents
LSE302	Station only
LSE302FS	Station & contents

LSE303

Size (H x W):
15¾ x 11" (540 x 360mm)
Supplied with the following:
10 x TT38RED Padlocks
4 x RLTT50 Pack of 10 Tags
1 x MLH5 Lockout Hasp 25mm



Code	Description
LSE303	Station only
LSE303FS	Station & contents

LSE306 DEPARTMENTAL LOCKOUT STATION SHADOW BOARD

Size (H x W):
31½" x 48" (800 x 1220mm)
Supplied with or without contents.

Supplied with the following:
100 x TT38RED Padlocks
10 x MLH5 Lockout Hasps 25mm
9 x RLTT50 Packs of 10 Tags
1 x RWPT01 Pen



Code	Description
LSE306	Lockout station only
LSE306FS	Lockout station and contents

LSE200 LOCKOUT STATION

Size (H x W):
23½" x 31½" (600 x 800mm)
Supplied with or without contents.

Designed with steel bars instead of individual hooks. Padlocks can be locked onto the station with the key inserted ready for use, or without the key which is ideal for deterring theft.

Supplied with the following:
50 x TT38RED Padlocks
3 x MLH1 Lockout Hasps
4 x Packs of RLTT50 Tags
1 x RWPO4 Pack of Electrical Work Permits



Code	Description
LSE200	Station only
LSE200FS	Station and contents

Applying Lockout/Tagout

Energy isolation and Lockout/Tagout are to be applied only by trained employees authorized to perform service or maintenance. Before Lockout/Tagout is applied, all employees who work in the affected area must be notified. Legislation requires that control of hazardous energy be done according to a step-by-step procedure.

1 Preparation For Shutdown

Before you turn off any equipment in order to lock/tag it out, you must know:

- The types and amounts of energy that power it.
- The hazards of that energy.
- How the energy can be controlled.

2 Equipment Shutdown

Shut the system down by using the operating controls. Follow whatever procedure is applicable for the equipment so that you don't endanger anyone else during shutdown.

3 Equipment Isolation

- Install all energy-isolating devices so that the equipment is isolated from its energy source.
- Be sure to isolate all energy sources and secondary power supplies as well as the main one.
- Never remove a fuse instead of disconnecting the energy or power.

4 Application Of Lockout Devices

- All energy-isolating devices are to be locked and tagged according to your company Lockout/Tagout procedures.
- Only the standardised devices supplied by your employer should be used for Lockout/Tagout and they should not be used for anything else.
- Use a Lockout device if your padlock cannot be placed directly on the energy control.
- When a Lockout device is used, every employee can lock out a single energy-isolating device.
- For large jobs, a Lockout Box can be used to maintain control over a large number of padlocks and keys.
- If tags are used together with a padlock, ensure they are securely fastened to the padlock.
- Fill tags out completely and correctly.

5 Control Of Stored Energy

Take any of the following steps that are necessary to guard against energy left in the equipment after it has been isolated from its energy sources.

- Inspect the system to make sure all parts have stopped moving.
- Relieve trapped pressure.
- Release the tension on springs, or block the movement of spring-driven parts.
- Block or brace parts that could fall because of gravity.
- Block parts in hydraulic and pneumatic systems that could move from loss of pressure.
- Bleed the lines and leave vent valves open.
- Drain process piping systems and close valves to prevent the flow of hazardous materials.
- If a line must be blocked where there is no valve, use a blank flange.
- Purge reactor tanks and process lines.
- Dissipate extreme cold or heat, or wear protective clothing.
- If stored energy can reaccumulate, monitor it to make sure it stays below hazardous levels.

6 Equipment Isolation Verification

Take any of the following steps that fit your company's equipment and energy control program:

- Make sure all danger areas are cleared of personnel.
- Verify that the main disconnect switch or circuit breaker cannot be moved to the 'on' position.
- Use a voltmeter or other equipment to check the switch.
- Press all start buttons and other activating controls on the equipment itself to PROVE that it is isolated. (This procedure is vital. Many accidents happen due to isolating the wrong control switch and not testing prior to commencing work).
- Shut off all machine controls when the testing is finished.

7 Performing The Work

Look ahead and avoid doing anything that could re-activate the equipment. Don't bypass the lockout when putting in new piping or wiring.

LOCKOUT TAGOUT CATALOGUE

ESSENTIAL PRODUCTS
FOR LOCKOUT/TAGOUT SYSTEMS
IN THE WORKPLACE

- LOCKOUT HASPS
- SAFETY PADLOCKS
 - STEEL, ALUMINUM & NYLON SHACKLE
- LOCKOUT TAGS
- CUSTOM TAGS & SIGNS
- PNEUMATIC & CABLE LOCKOUT
- FUSE LOCKOUT
- SOCKET, PLUG & CONTROLS LOCKOUT
- CIRCUIT BREAKER LOCKOUT
- VALVE LOCKOUT
- LOCKOUT KITS
- GROUP LOCKOUT
- LOCKOUT STATIONS



13028 Garrett Rd., Houston, TX 77044
T 713-673-4000 F 713-673-4242

email customerservice@bereps.com www.reecesafety.com